

The workplace, in which the equipment is used, is responsible to complete the records in the identity card. The identity card should be filled in before the equipment is put into operation for the first time. All information regarding the protective equipment (name, serial number, date of purchase and putting into operation for the first time, user's name, details regarding repairs and inspections, reasons of equipment's withdrawal from use) shall be recorded in the identity card of the relevant equipment.

Instruction Manual

TM-11-T2 LIFTING TRIPOD



Ref. no. AT 013-T2

IDENTITY CARD

DEVICE NAME MODEL		REFERENCE NO.	
DEVICE NUMBER		DATE OF MANUFACTURE	
USER'S NAME			
DATE OF PURCHASE		DATE OF PUTTING INTO OPERATION	

PERIODIC INSPECTIONS

	INSPECTION DATE	REASONS FOR INSPECTION OR REPAIR	IDENTIFIED DAMAGE, REPAIRS CARRIED OUT AND OTHER RELEVANT INFORMATION	NEXT INSPECTION DUE DATE	SIGNATURE OF A COMPETENT PERSON
1					
2					
3					
4					
5					
6					
7					
8					
9					
10					

SafetyLiftinGear.com
Unit R1D Rockingham Gate Poplar Way
West Cabot Park Bristol BS11 0YW
Tel: 0808 123 69 69 Fax: 0117 9381 602
sales@safetyliftinggear.com

Notified body, at which the European certification was performed and which supervises the production of the equipment:
APAVE SUDEUROPE SAS - BP 193 -
13322 MARSEILLE CEDEX 16 - FRANCE

DESIGNATED USE

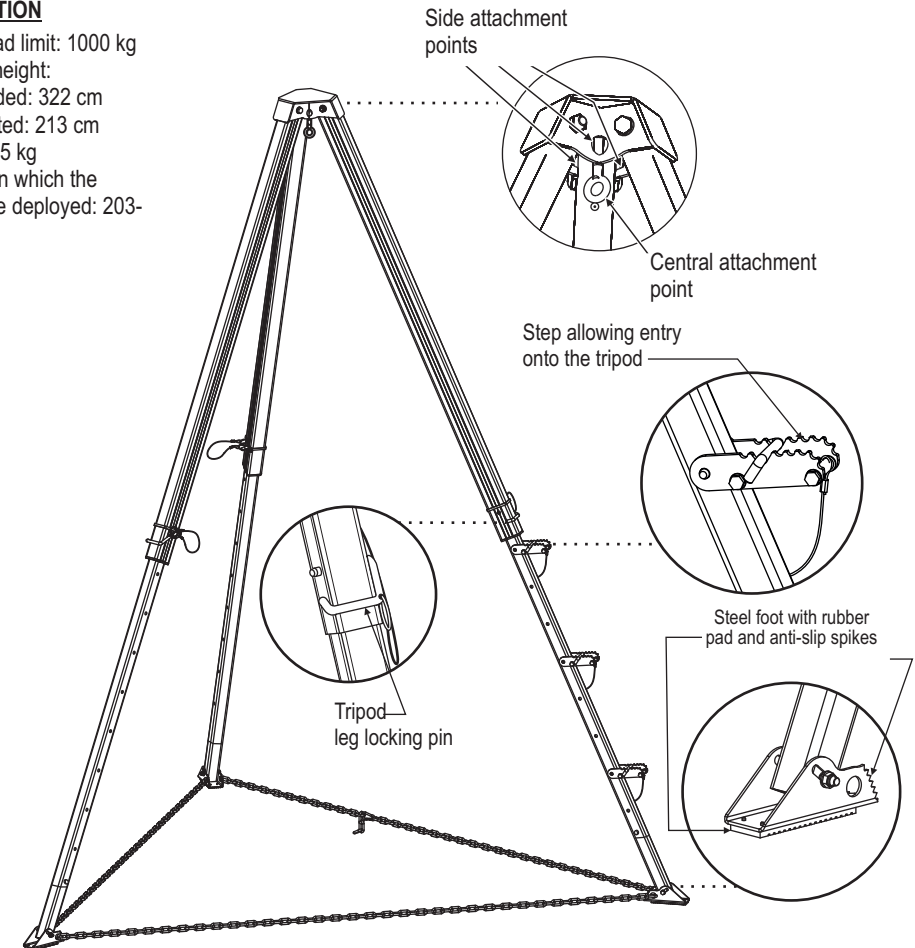
The TM 11-T2 lifting tripod is designed for lifting and lowering loads weighing up to 1000 kg.

CONSTRUCTION

- Head made of steel with 4 attachment points.
- - 4 attachment points: one central attachment point (eye bolt), 3 side attachment points (holes), located in the head's walls.
- - Legs made from duralumin profiles with rounded edges. They consist of two sections. The telescopic construction of the legs allows you to adjust their length. Locking pins are designed for setting the length of the legs. The legs are equipped with self-aligning steel feet with rubber pads. Feet have anti-slip spikes used for setting up the tripod on slippery (e.g. icy) surface.
- - Installation steps for maximum leg extension, you can use additional steps to allow easy and safe installation of the rope on the tripod head. You can use up to 3 steps for one tripod.
- - Chain an additional protection against uncontrollable spread of tripod's legs and unexpected folding of the device.

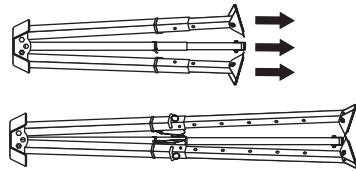
SPECIFICATION

- working load limit: 1000 kg
- operating height:
- legs extended: 322 cm
- legs retracted: 213 cm
- weight: 45.5 kg
- diameter on which the tripod can be deployed: 203-300 cm

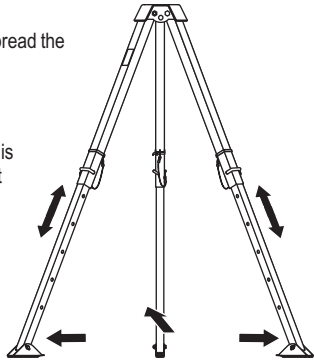


INSTALLING A TRIPOD

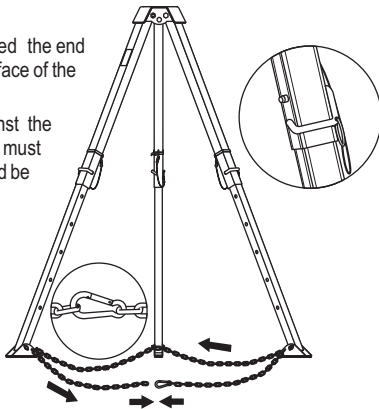
- Place the tripod on a flat, stable and hard surface. Pull out the tripod legs to the desired length and lock with the locking pins.



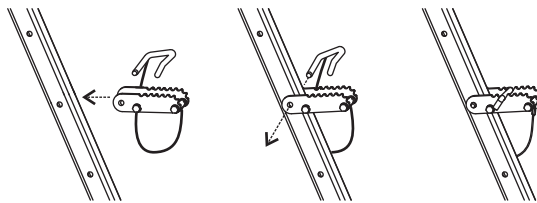
- Set the tripod in an upright position and fully spread the legs.
- Make sure the feet are on firm ground.
- Adjust the length of the legs so that the head is located in the horizontal plane. The legs must have the same length.



- Make sure the locking pins are properly secured the end of the locking pin must protrude above the surface of the tripod leg.
- Secure the tripod legs with the chain against the accidental sliding open. The ends of the chain must be fastened with a snap hook. The chain should be tight between the legs of the tripod.



- During the installation of the cable on the head of the deployed tripod head it is possible to step onto the tripod leg using the steps. They are installed on the outside of the legs in the holes used for adjusting the height of the tripod.



TRIPOD LOAD CARRYING CAPACITY

The load hoisted by the TM-11-T2 tripod may be connected to one of the attachment points, which are located in the tripod head. Maximum operating load carrying capacity of the TM-1-T2 tripod is 1000 kg.

FOLDING A TRIPOD

- Fold the tripod legs inward.
- Place the tripod on the ground and after removing the locking pins pull the legs in.

THE ESSENTIAL SAFETY RULES FOR OPERATING THE TM-11-T2 TRIPOD

- Tripod TM 11-T2 is used for lifting and lowering loads weighing up to 1000 kg.
- The TM 11-T2 is not an emergency device for lifting people and it should not be used for this purpose.
- Do not use a tripod contrary to its intended use.
- Do not lift loads over an area occupied by people.
- Do not change the tripod's design, repair or replaceable elements included in the kit.
- Before each use of the tripod, carry out a thorough inspection to check the tripod's condition and proper operation. Carefully check all elements of the tripod, paying particular attention to any damage, excessive wear, corrosion, abrasion, cuts and malfunction. Check the head, all the mounting screws, tripod legs' profiles, feet and chain. Check the adjustment of the legs' length and adjustment lock.
- At least once a year, after 12 months of use the tripod should be withdrawn from use for a detailed interim inspection. The inspection can be carried out by the person responsible in the workplace for the interim inspections of the protective equipment and trained for this purpose. Periodic inspections can also be carried out by the equipment manufacturer or a person or a company authorized by the manufacturer.
- The TM-11-T2 tripod must be immediately withdrawn from use if there is any doubt about the condition of the device or its operation. The device may be readmitted for use only after a manufacturer's detailed inspection, and manufacturer's written consent for its use.
- Position a tripod on a flat, hard and stable surface, free of loose materials, such as rocks, debris etc. On a slippery surface, use tripod feet with spikes.
- While pay attention to the chain, which fastens the tripod legs, as it can cause accidental tripping of the worker.
- Check the stability of the load attached to the cable, on which it is hoisted, to prevent accidental detachment of any of the elements. Check the latch of the hook.
- The use of the TM-11-T2 tripod with other devices (such as devices for lifting and lowering loads) must be in accordance with the instructions for use of these devices.
- It is forbidden to use the kits in which the TM-11-T2 is included, in which the operation of any component disrupts the operation of other components.
- In case of any doubt as to the conditions and usage of the tripod, please contact the manufacturer of the device.

MAINTENANCE AND STORAGE

When using the tripod, protect it against mechanical, chemical and thermal damage. Do not use a damaged or malfunctioning tripod.

Clean a dirty tripod with a damp cloth. Store the tripod indoors, away from moisture and sources of heat.

TRANSPORT

The tripod should be transported in packaging protecting it from damage or getting wet, e.g. bags made of impregnated fabric or in steel or plastic cases or boxes.